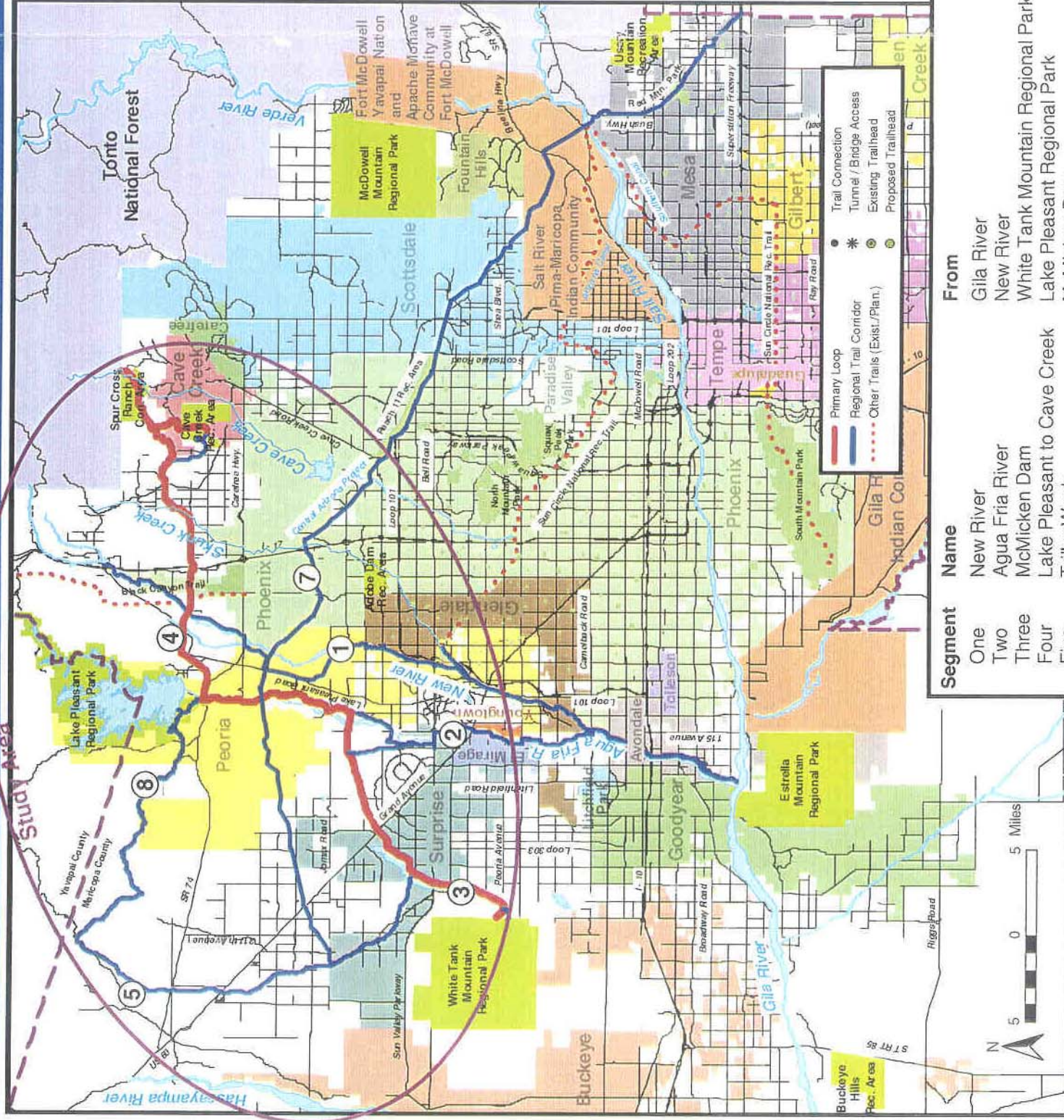


# Trail Alignments



## Recommended Trail Alignments

The recommended trail alignments in Phase One of the Maricopa County Regional Trail System are shown in Figure 5. These alignments are the result of careful analysis by the project study team of all the available data. The exact placement of the trail in each alignment has not been identified. The project team anticipates that this will be done as each segment progresses towards design. Where the trail is identified inside a park, the master plan for that park will determine the exact trail placement. Where the trail is identified on FCDMC property, the master plan for that flood control facility will set the placement of the trail. Other trail placements will be determined during negotiations with the agencies or individuals holding ownership or having control over specific properties. Descriptions of each segment including aerial, ownership, natural features, and jurisdiction maps are included on pages 11-29. Photographs of each area are included to help explain the terrain and show some of the existing facilities along the route.

Phase One identifies 221 miles of potential trails. The primary loop, shown in red on the map, extends approximately 51 miles. This route has been selected as a priority because it provides the most direct connections between the parks located in Phase One.

Segment	Name	From	To	Miles
One	New River	Gila River	New River	42
Two	Agua Fria River	New River	Lake Pleasant Regional Park	26
Three	McMicken Dam	White Tank Mountain Regional Park	Agua Fria River	19
Four	Lake Pleasant to Cave Creek	Lake Pleasant Regional Park	Cave Creek Recreation Area	27
Five	Tribby Wash	McMicken Dam	Northern County Border	23
Seven	Central Arizona Project	Tribby Wash	Eastern County Border	68
Eight	Morgan City Wash	Tribby Wash	Lake Pleasant Regional Park	16
Total Miles				221

Proposed Trail Alignments



Three of the recommended segments extend outside the boundaries of the Phase One study area. These are the New River, Agua Fria River, and Central Arizona Project (CAP) corridors. The New River and Agua Fria River segments have already been studied by the Maricopa Association of Governments and the Flood Control District of Maricopa County. Since the ultimate goal of the Maricopa County Trail Commission is to connect all the regional parks, it is appropriate to include the entire corridors from the existing studies at this time. Identifying only a portion of the corridor seemed counter-productive. The same rationale applied to the Central Arizona Project Aqueduct. The CAP was included from Tribby Wash to the eastern boundary of Maricopa County. The canal cuts across the center of the study area and has the potential to become a major trail route across the entire County. A feasibility study sponsored by several jurisdictions to determine how to incorporate a shared use path along the canal will be completed in 2003.