

**Arizona Department of Transportation
PG TD 0260
Contract Name
Contract T0849U0001
MPD Task Assignment 30-09**

ADOT Statewide Bicycle and Pedestrian Program

Summary of Phase V Activities

November 2009

Prepared for:



Prepared by:



TABLE OF CONTENTS

1	INTRODUCTION.....	1
1.1	Introduction	1
1.2	Project Overview	1
2	SUMMARY OF PHASE V ACTIVITIES	2
2.1	BICYCLE AND PEDESTRIAN STEERING COMMITTEE	2
2.2	GOHS Funding Grant Applications	2
2.3	Cycle Arizona Bicycle User Map Update	3
2.4	Arizona Bicycling Streets Smarts Guide	4
2.5	Bicycle and Pedestrian Projects Listing.....	5
2.6	League of American Bicyclists (LAB) Award Application	5
2.7	Website Enhancements	9
3	SUMMARY AND CONCLUSIONS.....	9

APPENDICES

APPENDIX A – Steering Committee Meetings

APPENDIX B – FY2010 Governor’s Office of Highway Safety Funding
Grant Applications

APPENDIX B – Review of Five-Year Construction and Facilities
Program

APPENDIX C – League of American Bicyclists, 2009 Bicycle Friendly
State, Ranking and Award Applications

1 INTRODUCTION

1.1 Introduction

This document provides a summary of activities completed in support of Phase V of the Arizona Statewide Bicycle and Pedestrian Program. The purpose of Phase V was to continue to implement and/or update recommendations from the Arizona Statewide Bicycle and Pedestrian Plan. A summary of the following activities is presented in Section 2.

- Project Management and Steering Committee Meetings
- Governor's Office of Highway Safety (GOHS) Bicycle and Pedestrian Program Grant Proposals
- Cycle Arizona Bicycle User Map Update
- Arizona Bicycling Streets Smarts Guide Update
- Bicycle and Pedestrian Projects Listing
- Website Maintenance
- Website Enhancements
- League of American Bicyclists (LAB) Award Application

1.2 Project Overview

Approximately 20 percent of U.S. citizens, or nearly 41 million people, ride bicycles at least one or more times per month. Bicycling and walking are basic, fundamental modes of transportation that in today's motorized world of travel are commonly overlooked as an option to help manage our circulation issues. Planning for and constructing accommodations for bicycling and walking and improving safety, education, and enforcement programs are critical in increasing the mobility of pedestrians and bicyclists. One of the underlying principles in planning for bicycling and walking is to provide a system that allows users significant mode choices, and to make bicycling and walking a more attractive, viable option for transportation. This includes creating a non-motorized network comprised of on-street facilities, off-street facilities, and end of trip facilities. Education and enforcement programs also enhance alternative forms of transportation.

In 2003, the Arizona Department of Transportation completed the Arizona Statewide Bicycle and Pedestrian Plan. The purpose of the Arizona Statewide Bicycle and Pedestrian Plan is to provide a long-term plan for a statewide system of interconnected bicycle facilities that will guide ADOT transportation decisions relating to bicycle and pedestrian travel, planning, and facility development.

The plan was developed in two phases; Phase I and Phase II. Phase I reviewed existing conditions, developed a Statewide Bicycle Network, and recommended bicycle and pedestrian programs that when implemented, will improve the accommodation of bicycles and pedestrians on Arizona Highways. Implementation of several of the most critical Phase I recommendations began in Phase II. Phase II included the creation of a Bicycle User Map, Bicycle Share the Road Guide, Sharing the Road with Pedestrians Guide, Arizona Bicycling Street Smarts, website enhancements, a Grant and Funding Plan, an Education Plan and a Pedestrian Action Plan. The majority of the bicycle and

pedestrian facility improvements are planned to occur as ADOT constructs and improves roadways to meet current standards.

Implementation of the Plan continued in Phase III and IV. These phases included training courses, updates to educational materials, website enhancements, review of programmed projects to identify opportunities to integrate bicycle and/or pedestrian facilities into programmed projects, development of a pedestrian demand measures map, and preparation of funding grant applications to the Governor's Office of Highway Safety.

Phase V furthered implementation of the Arizona Statewide Bicycle and Pedestrian Plan and included updates to earlier phase tasks:

- Project Management and Steering Committee Meetings
- Governor's Office of Highway Safety (GOHS) Bicycle and Pedestrian Program Grant Applications
- Cycle Arizona Bicycle User Map Update
- Arizona Bicycling Streets Smarts Guide Update
- Bicycle and Pedestrian Projects Listing
- League of American Bicyclists (LAB) Award Application
- Website Enhancements

Each of these is described in more detail in the following sections.

2 SUMMARY OF PHASE V ACTIVITIES

2.1 BICYCLE AND PEDESTRIAN STEERING COMMITTEE

Two Bicycle and Pedestrian Steering Committee Meetings were held in conjunction with Phase V activities. These were held on:

- February 19, 2009
- June 24, 2009

The purpose of the Steering Committee Meetings is to report progress of project deliverables and activities, and to receive their input and feedback.

Steering Committee meeting agendas, PowerPoint presentations and available summary notes are included in **Appendix A**.

2.2 GOHS Funding Grant Applications

Funding applications were submitted to the Governor's Office of Highway Safety, Fiscal Year 2010 Applications. Two funding applications were submitted:

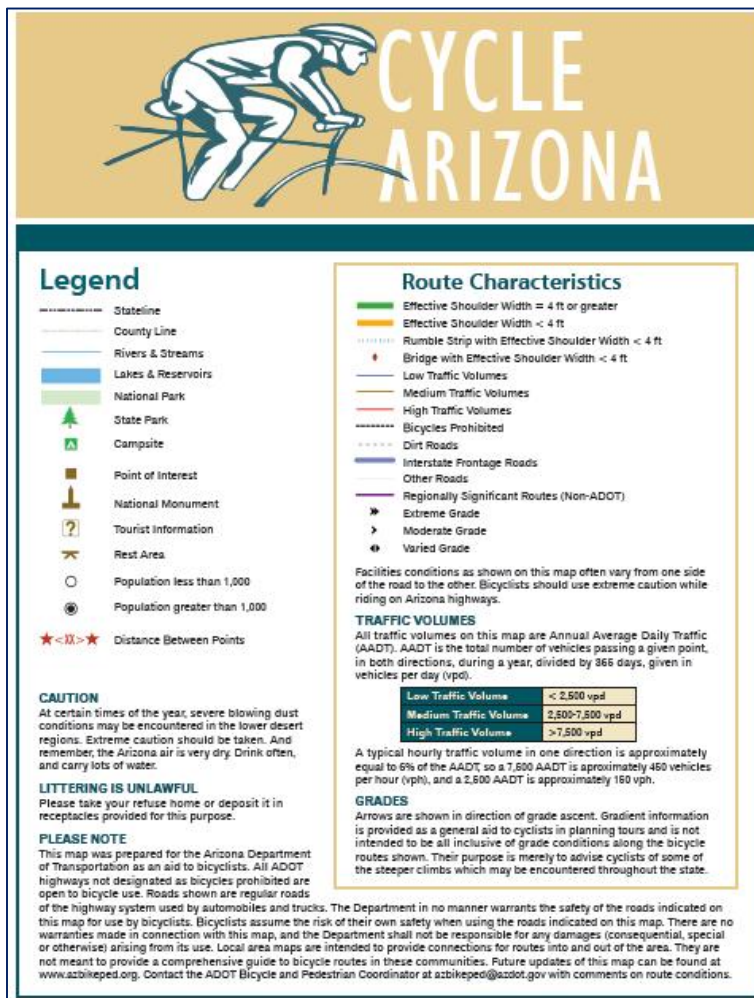
- *Pedestrian Safety Awareness Campaign, Verde Valley, Arizona, Year III*: The purpose of the FY2010 Bicycle and Pedestrian Safety Awareness Campaign is to continue to fund a sustained, public education campaign to increase the safety awareness of motorists, pedestrians, and bicyclists on Arizona roadways. The FY2010 funds, if awarded, will continue the efforts of the Campaign in the Verde Valley area that was initiated with FY2007 GOHS fund, and continued with FY2009 GOHS funds to further drive the message of safety so behaviors and attitudes change.

ADOT Statewide Bicycle and Pedestrian Program
 Summary of Phase V Activities

- *Pedestrian and Bicycle Facility Design Training Courses:* This proposal requests funding for ADOT to conduct a series of bicycle and pedestrian facility design and implementation training courses and workshops to be held for agencies throughout Arizona. The purpose of the bicycle and pedestrian design courses and workshops is to increase the knowledge and design skills of engineers and planners of bicycle and pedestrian facilities. FY 2010 funding is requested to continue to offer in-depth courses on pedestrian and bicycle facilities, and expand the courses and workshops to other areas of the state including tribal communities.

The funding grant applications that were submitted are included in **Appendix B**. These are also available <http://www.azbikeped.org/statewide-bicycle-pedestrian.html>.

2.3 Cycle Arizona Bicycle User Map Update



Phase V included a major update to the Arizona Bicycle User Map. Major revisions included:

shoulder width that is less than four feet.

- Selected Arizona Bicycle Laws was updated to include Title 28 A.R.S., 756. Title 28 A.R.S., 754, was removed from the Cycle Arizona map.
- The following sections under “Roadway Safety Tips” was updated:
 - “Cycling Layers of Safety”
 - Information about “Clothing”

ADOT Statewide Bicycle and Pedestrian Program
Summary of Phase V Activities

- iii. Cattleguards
- iv. Storm Grates
- Bicycle Friendly State logo was added to the map.

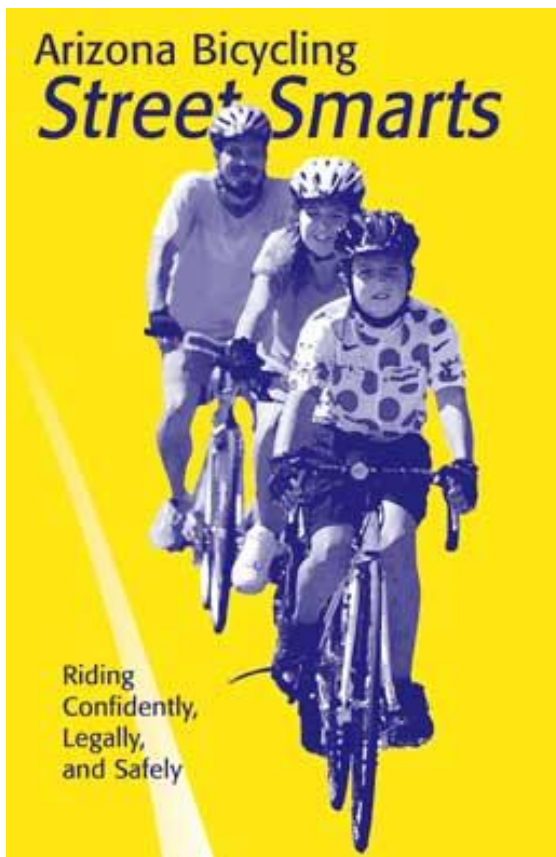
The updated map is available at <http://www.azbikeped.org/maps.htm>.

2.4 Arizona Bicycling Streets Smarts Guide

The ADOT Statewide Bicycle and Pedestrian Plan (2003) included an education plan to guide ADOT efforts in educating cyclists, motorists, and pedestrians. The education plan identifies five focus areas for improving bicycling and pedestrian safety. These are:

- Safety Education Training
- Safe Routes to School
- Bicycle and Pedestrian Facility Design Training
- Safety Awareness Campaign
- Archived Data

As part of the Safety Education Training focus area, ADOT previously (Phase II, 2004) collaborated with Rubel BikeMaps to publish and print *Arizona Bicycling Street Smarts: Riding Confidently, Legally, and Safely*. Phase V activities included making minor revisions to the 2004 Guide, and purchasing an additional 5,000 copies of the guidebook. Minor revisions to the 2004 guide included:



- (1) corrected several minor punctuation errors (i.e. missing periods).
- (2) page 1: removed references to recycled paper.
- (3) page 3: under the Helmet section, changed word from "by 85%" to "by as much as 85%."
- (4) page 23: corrected misspelling of "Department" in the caption for the cattle guard.
- (5) page 37: revised the text in the "When Traffic Lights Don't Turn" section, to read as: "If your bicycle doesn't trip the detector, you have to wait for a car to do it, or stop and wait until it is safe to go through the red light. Going through the red isn't against the law, because the light is inoperative (Arizona Revised Statutes 28-645)."
- (6) page 44 added text of A.R.S. Article 3, 28-645C
- (7) page 48 updated date to "November 2009"

2.5 Bicycle and Pedestrian Projects Listing

A review of the ADOT 2010-2014 Five-Year Transportation Facilities Construction Program was performed to identify projects that may improve the comfort and/or safety of bicyclists and pedestrians that utilize the state highway system. The purpose of the review was to provide a tool to enable interested stakeholders to become aware of projects are currently programmed that may provide benefit to cyclist and pedestrians, so that they can provide their input and perspectives to ensure that bicycle and pedestrian interests are appropriately represented during the project planning, design, and construction.

The review of the 5-year program identified two standalone bicycle and pedestrian projects:

- A pedestrian bridge /walkway over I-17, between Bethany Home Road and Northern Avenue
- Construction of landscaping, irrigation and pedestrian lighting along SR 260, from Porter Mountain Road to Woodland Road

Despite only two “pedestrian-specific” projects within the 2010-2014 Five-Year Program, dozens of projects in the Program have the potential to improve the comfort and/or safety of bicyclists and pedestrians. Projects that have the potential to provide benefits to cyclists or pedestrians were categorized into the following:

- Roadway Construction/Widening
- Pavement Preservation
- Shoulder Improvements
- Traffic Interchange Improvements/Construction
- Intersection Improvements

Projects that were identified are shown and listed in **Appendix C**. The table of projects in **Appendix C** includes the project TRAC number, the route, beginning and ending mileposts, project location description, and a project description. The table of projects identifies whether the project will provide potential benefits to pedestrians, cyclists, or both.

A map of projects is included in the **Appendix C**, and is also available at <http://www.azbikeped.org/statewide-bicycle-pedestrian.html>.

2.6 League of American Bicyclists (LAB) Award Application

The League of American Bicyclists (LAB) sponsors the annual Bicycle Friendly State ranking and award recognition. The Bicycle Friendly State Program is a two part recognition program that ranks and recognizes states that actively support bicycling. First, states are ranked annually based on scoring the 50 states on a 75-item questionnaire that evaluates six key areas related to bicycling:

- Legislation
- Policies and Programs
- Infrastructure

ADOT Statewide Bicycle and Pedestrian Program
 Summary of Phase V Activities

- Education and encouragement
- Evaluation and planning
- Enforcement

Secondly, states may apply for the Bicycle Friendly State award recognition. As part of Phase V activities, the Consultant assisted ADOT in the preparation of Bicycle Friendly State 2009 Ranking and Award Recognition Applications. The ranking and award applications that were submitted are included in **Appendix D**.

The LAB ranked each of the 50 states based on scoring for six key areas related to bicycling. The LAB published the results of the award and ranking application in summer 2009. Arizona received a rank of seven, and was awarded a Bronze award designation. **Table 1** describes Arizona’s ranking in each of the categories.

Table 1 - LAB 2009 Arizona Rankings

		2009 Category Rankings					
2009 Rank	2008 Rank	Legislation	Programs and Policies	Infrastructure	Education	Evaluation	Enforcement
7	3	6	7	8	9	16	13

The LAB provided feedback to ADOT regarding the Arizona 2009 Bicycle Friendly State Ranking and Award Recognition Application. Specific recommendations and feedback received from LAB for each of the six categories is summarized in **Table 2**.

Table 2 - LAB Feedback and Action Items to Improve Ranking and Award Recognition

Category	Recommendations to Improve Ranking and Award Recognition	Suggestions to Improve Ranking or Award Recognition
Legislation	Bicycle is not considered a legal vehicle	• <i>Ranking</i>
	No restriction on the use of cell phones while operating a vehicle	• <i>Ranking</i>
	Consider instituting a Bike Caucus in your state legislature. The national Congressional Bike Caucus has been instrumental in building support for bicycle friendly legislation and funding, and is a good example.	• <i>Award</i>
	Cyclists along with pedestrians, equestrians and motorcycle riders are more vulnerable to serious injury or death than are drivers and passengers of automobiles. Arizona should work to pass legislation that further protects these road users and increase the fines and sentences for drivers who violate their rights to the road.	• <i>Award</i>
Policies & Programs	Arizona should adopt a statewide Complete Streets policy. Every street should accommodate bicyclists, pedestrians, motorists and transit users of all abilities and ages. This policy should also be accompanied by thorough training for Arizona DOT planners and engineers and include an implementation checklist.	• <i>Award</i>

**Table 2 - LAB Feedback and Action Items to Improve Ranking and Award Recognition
 (continued)**

Category	Recommendations to Improve Ranking and Award Recognition	Suggestions to Improve Ranking or Award Recognition
Infrastructure	No statewide bike route network signage	<ul style="list-style-type: none"> • <i>Ranking</i>
	No safety funding spent on bicycling in last 3 years	<ul style="list-style-type: none"> • <i>Ranking</i>
	No policy requiring bike racks at state owned buildings Continue to increase the amount of bike parking available at all state owned and operated facilities, as lack of secure parking is one of the top reasons cited for not bike commuting. Parking facilities should comply with either Arizona DOT or APBP guidelines.	<ul style="list-style-type: none"> • <i>Ranking</i> • <i>Award</i>
	Bicycling accommodations are proven to extend the reach and increase the ridership of transit. Arizona DOT and transit administration should work to increase the number of busses with bike racks until all busses in the state are fully equipped.	<ul style="list-style-type: none"> • <i>Award</i>
Education and Encouragement	No questions on motorist's responsibilities towards cyclists on CDL test	<ul style="list-style-type: none"> • <i>Ranking</i>
	Arizona should consider adding safety officers on bicycles at the state police level. These officers can be effectively utilized around state government facilities and on state university campuses. Training and certification is available.	<ul style="list-style-type: none"> • <i>Award</i>
	The state should look to expand local jurisdictions traffic citation diversion program throughout the whole state. This program should include Share the Road instruction for motorist and cyclists alike.	<ul style="list-style-type: none"> • <i>Award</i>
	Arizona should work on a social marketing program (Smart Trips/Travel Smart) to promote its trip reduction plan. This program could target specific state agencies or employment centers with education and encouragement to shift auto trips to bike trips.	<ul style="list-style-type: none"> • <i>Award</i>
	Consider offering an employee bike fleet or bike sharing program to state employees. These bikes are more cost effective and easier to use than a vehicle fleet for short trips. Successful programs often let employees use the bikes for exercise and/or commuting.	<ul style="list-style-type: none"> • <i>Award</i>
	Encourage the Governor or members of the state legislature to proclaim May as Bike Month. Consider hosting a Governor's bike ride during May to promote cycling as a healthy and fun means of recreation and transportation.	<ul style="list-style-type: none"> • <i>Award</i>
	Set a targeted goal for annual increase in Bike to Work Day/Week participation for state employees.	<ul style="list-style-type: none"> • <i>Award</i>

**Table 2 - LAB Feedback and Action Items to Improve Ranking and Award Recognition
 (continued)**

Category	Recommendations to Improve Ranking and Award Recognition	Suggestions to Improve Ranking or Award Recognition
Evaluation & Planning	No statewide bicycle conference or summit	• <i>Ranking</i>
	Continue to work towards Arizona's targeted goals of bicycle ridership increase as well as Single Occupancy Vehicle and Vehicle Miles Travel decreases.	• <i>Award</i>
	Consider conducting an economic impact study on bicycling related economy in Arizona. Oregon's recent study concluded that bicycling in the greater Portland area to be worth nearly \$90million and has created over 1,000 green economy jobs.	• <i>Award</i>
Enforcement	No education of police officers on cyclist rights & responsibilities through academy	• <i>Ranking</i>

Other general recommendations provided by LAB to improve conditions for bicyclists are listed in **Table 3**. Note that these recommendations were not made specific to Arizona, but are general for all communities that desire to improve conditions for bicyclists.

Table 3 – General Recommendations to Improve Conditions for Cyclists

Category	General Recommendations
Policies & Programs	• Make the city (state) a model employer by encouraging bicycle use among its employees (by providing parking, showers and lockers, and establishing a city (state) bicycle fleet)
	• Ensure all city (state) policies, plans, codes, and programs are updated and implemented to take advantage of every opportunity to create a more bicycle-friendly city (state). Staff in all departments should be offered training to better enable them to complete this task.
	• Develop special programs to encourage bicycle use in communities where significant segments of the population do not drive (through Safe Routes to School programs) and where short trips are most common.
	• Establish a citywide (statewide), multi-disciplinary committee for non-motorized mobility to submit a regular evaluation and action plan
Infrastructure	• Provide safe and convenient bicycle access to all parts of the community through a signed network of on and off-street facilities, low-speed streets, and secure parking. Local cyclists should be involved in identifying maintenance needs and ongoing improvements.

Table 3 – General Recommendations to Improve Conditions for Cyclists (continued)

Category	General Recommendations
Infrastructure (continued)	<ul style="list-style-type: none"> Promote inter-modal travel between public transport and bicycles by providing bike racks on buses, improving parking at transit, and improving access to rail and public transport vehicles.
Education and Encouragement	<ul style="list-style-type: none"> Establish information programs to promote bicycling for all purposes, and to communicate the many benefits of bicycling to residents and businesses (i.e. with bicycle maps, public relations campaigns, neighborhood rides)
	<ul style="list-style-type: none"> Educate all road users to share the road and interact safely. Road design and education programs should combine to increase the confidence of bicyclists.
Evaluation & Planning	<ul style="list-style-type: none"> Adopt a target level of bicycle use (i.e. percent of trips) and safety to be achieved within a specific timeframe, and improve data collection necessary to monitor progress
Enforcement	<ul style="list-style-type: none"> Enforce traffic laws to improve the safety and comfort of all road users, with a particular focus on behaviors and attitudes that cause motor vehicle/bicycle crashes.

2.7 Website Enhancements

Phase V activities included routine maintenance and minor enhancements to the ADOT Bicycle and Pedestrian Program website, azbikeped.org. The website was reorganized to improve accessibility of education materials that were completed in previous phases. In addition, the website was reviewed for broken links which were subsequently corrected, and updates were made to the calendar of events and contacts sections of the website.

3 SUMMARY AND CONCLUSIONS

The following activities and deliverables were completed as part of ADOT Bicycle and Pedestrian Program, Implementation Support, Phase IV.

- Two Bicycle and Pedestrian Steering Committee Meetings were held.
- Two funding applications were submitted to the Arizona Governor’s Office of Highway Safety, for a Pedestrian Safety Awareness Campaign and the second proposal for Bicycle and Pedestrian Facility Design training courses.
- The Cycle Arizona Bicycle User Map was updated to reflect the most current HPMS data, and to incorporate rumble strips along state highways.
- A reprint of Arizona Bicycling Street Smart Guidebook was ordered. Minor updates were made to the text.
- A review of the ADOT Five-Year Construction and Facilities Program was conducted to identify projects that may provide potential benefits to bicyclists and pedestrians.
- Updates to azbikeped.org were completed.
- A ranking and award recognition application was prepared and submitted to the League of American Bicyclists (LAB).

APPENDIX A – BICYCLE AND PEDESTRIAN STEERING COMMITTEE

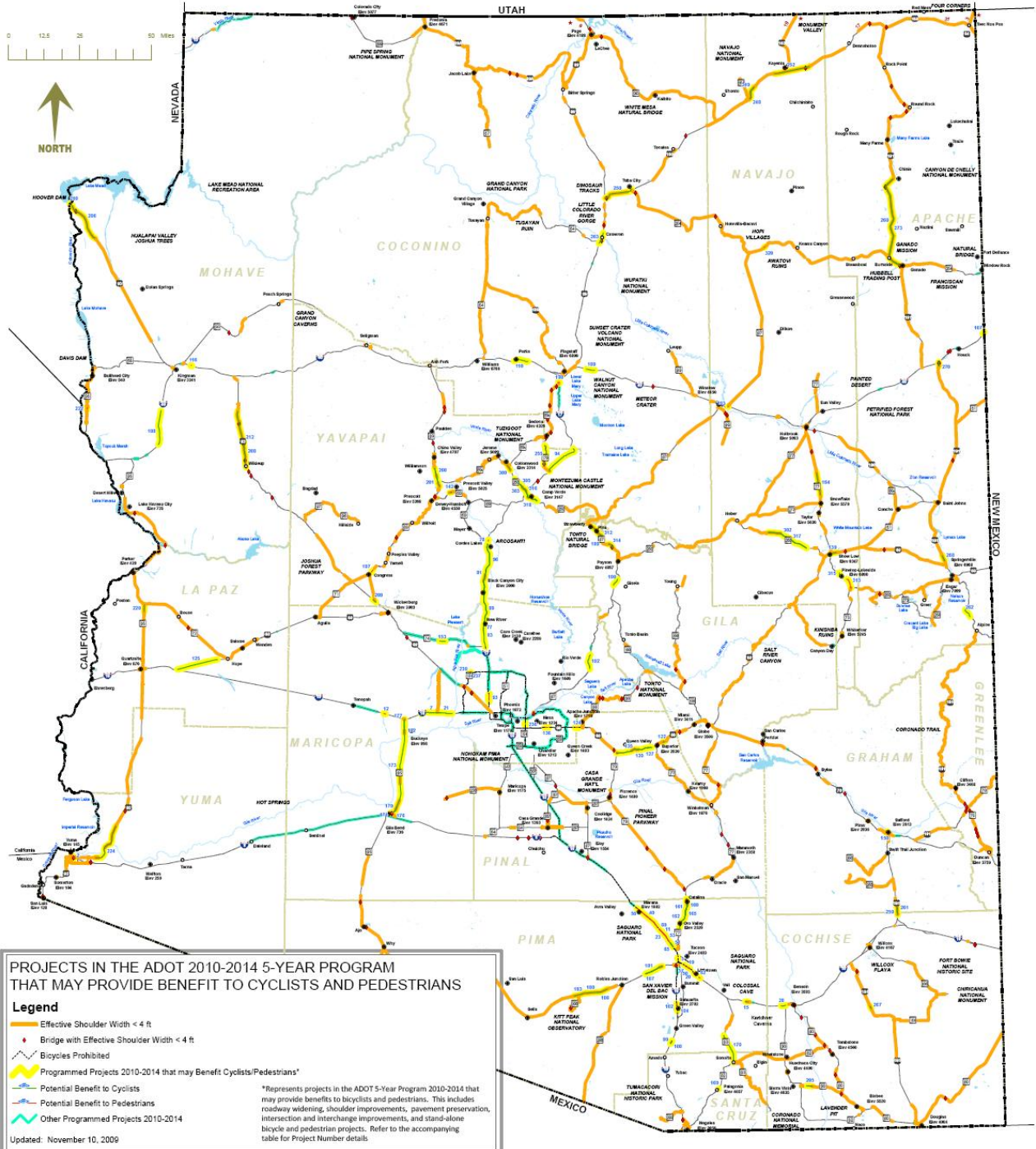
APPENDIX B – FY2010 GOVERNOR’S OFFICE OF HIGHWAY SAFETY FUNDING GRANT APPLICATIONS

APPENDIX C – REVIEW OF FIVE-YEAR CONSTRUCTION AND FACILITIES PROGRAM FOR PROJECTS THAT MAY BE BENEFICIAL TO BICYCLISTS AND PEDESTRIANS



MAP OF POTENTIAL PROJECTS THAT MAY BENEFIT BICYCLISTS AND PEDESTRIANS

A FULL SIZE VERSION OF THIS MAP IS AVAILABLE AT AZBIKPED.ORG.



ADOT Statewide Bicycle and Pedestrian Program
Summary of Phase V Activities

PROGRAMMED PROJECTS(2010-2014) THAT MAY PROVIDE BENEFIT TO CYCLISTS AND PEDESTRIANS

* MAP ID # CORRESPONDS TO PROJECT NUMBERS ON THE ACCOMPANYING MAP

MAP ID	RECID	ITEM NO	ROUTE	BEGIN MP	END MP	COUNTY	TRACS NO.	DISTRICT	LOCATION	WORK CATEGORY	WORK DESCRIPTION	CFY	FUNDS	COST	BENEFITS TO		
															PEDESTRIANS	BICYCLES	NOTE
15	12054	13408.00	I 010	288	289	PM	H747301C	S	CIENEGA CREEK - MARSH STATION, PHASE III	Roadway Construction/Widening	Remove existing rail & bridge, reconstruct mainline	\$2,009	IM	9400	-	YES	
21	12901	43409.00	I 010	125	130	MA	H729601C	E	SARIVAL AVE TO DYSART RD	Roadway Construction/Widening	Construct GPL (City Advancement) Outside Lane	\$2,009	NH	59000	-	YES	
28	13325	10106.00	I 010	301	303	CH	H650401C	S	SR 90 TI		Reconstruct SR 90 TI and add passing lane	\$2,009	STP	1476	-	YES	
39	13674	43409.00	I 010	125	130	MA	H729601C	E	SARIVAL AVE TO DYSART RD	Roadway Construction/Widening	Construct GPL (City Advancement) Outside Lane	\$2,009	TEA	185	-	YES	Refer to #21
54	13427	11513.00	I 010	253	255	PM	C	T	RUTHRAUFF RD - PRINCE RD	Roadway Construction/Widening	Widen to 8 lanes	\$2,013	NH	3000	-	YES	
65	12422	13310.00	I 010	253	255	PM	C	T	RUTHRAUFF RD - PRINCE RD	Roadway Construction/Widening	Reconstruct roadway	\$2,010	NH	7000	-	YES	
77	13673	16209.00	I 017	229	233	MA	H760401C	M	ANTHEM WAY TO NEW RIVER RD	Pavement Preservation	1/2" Mill & 1/2" AR-ACFC	\$2,009	STATE	1400	-	YES	
81	11364	14509.00	I 017	245	252	YV	H636801C	P	BLACK CANYON HILL, SB	Pavement Preservation	Mill 3/4" + ARFC	\$2,009	IM	6000	-	YES	
83	13026	44209.00	I 017	224	232	MA	H688101C	E	SR 74 TO ANTHEM WAY	Roadway Construction/Widening	Construct General Purpose Lane (GPL) (STAN Advancement)	\$2,009	STATE	30500	-	YES	
86	13622	14509.00	I 017	245	252	YV	H636801C	P	BLACK CANYON HILL, SB	Pavement Preservation	Mill 3/4" + ARFC	\$2,009	HES	3000	-	YES	See # 81
89	13419	10013.00	I 017	232	262	YV	H680001C	P	ROCK SPRINGS TO CORDES JUNCTION	Roadway Construction/Widening	Construct roadway widening	\$2,013	NH	9484	-	YES	
94	10915	18606.00	I 017	299	312	YV	H613601C	F	YAVAPAI COUNTY - JCT SR 179 (SB)	Pavement Preservation	RR (4"TL, 3"PL) + RR ARFC	\$2,009	IM	7309	-	YES	
96	13007	10212.00	I 017	232	262	YV	C	P	ROCK SPRINGS TO CORDES JUNCTION	Roadway Construction/Widening	Widen roadway	\$2,012	NH	9500	-	YES	
108	13746	18109.00	I 040	21	33	MO	H721201C	K	MP 21-WALNUT CREEK (WB)	Pavement Preservation	RR 5" TL & 3" PL & 2" AC & ARFC	\$2,009	IM	11476	-	YES	
109	9145	10506.00	I 040	205	208	CN	H545701C	F	WALNUT CANYON (WB)	Roadway Construction/Widening	Reconstruct Roadway (Reprofile Vertical Curves)	\$2,011	IM	6500	-	YES	
110	13659	16309.00	I 040	177	182	CN	H751401C	F	MP 177 TO 182, WB AND EB	Shoulder Improvements	Shoulder rehabilitation	\$2,009	STATE	553	-	YES	
112	13733	18109.00	I 040	21	33	MO	H721201C	K	MP 21-WALNUT CREEK (WB)	Pavement Preservation	RR 5" TL & 3" PL & 2" AC & ARFC	\$2,009	STATE	50	-	YES	Refer to #108
122	11457	11008.00	U 060	230	231	PN	H581801C	G	OAK FLAT - DEVIL'S CANYON	Roadway Construction/Widening	Construct passing/climbing lane	\$2,009	STP	6250	-	YES	
125	11360	16609.00	U 060	32	46	LA	H636401C	Y	JCT I-10 TO VICKSBURG ROAD	Pavement Preservation	Cold in place recycle & ARFC	\$2,009	STP	10200	-	YES	
127	11393	12910.00	U 060	222	225	PN	C	G	SILVER KING SECTION	Roadway Construction/Widening	Reconstruct roadway	\$2,011	STP	15000	-	YES	
139	7702	10612.00	U 060	342	344	NA	H510701C	G	SHOW LOW TO LITTLE MORMON LAKE	Roadway Construction/Widening	Widen Roadway	\$2,012	NH	5000	-	YES	
142	12938	14409.00	S 069	289	289	YV	H741001C	P	PRESCOTT VALLEY (BETWEEN GLASSFORD HILL & PRESCOTT E HWY)	Roadway Construction/Widening	Construct one additional lane in each direction resulting in 6 lanes	\$2,009	STATE	3350	-	YES	
153	12304	40610.00	S 074	13	15	MA	H696101C	P	US 60 TO SR 303L, MP 13 TO MP 15 (EB)	Roadway Construction/Widening	Construct passing lane	\$2,010	STATE	2000	-	YES	
164	8549	11308.00	S 077	364	372	NA	H546001C	H	MP 364 TO MP 372	Roadway Construction/Widening	Construct passing lane	\$2,010	NH	2250	-	YES	
170	13417	17409.00	S 083	32	44	PM	H747001C	T	JCT SR 82 (MP 31.6) TO MP 43.5		HIP Recycle w/ Chip Seal	\$2,009	STP	2750	-	YES	
172	13641	45909.00	S 085	150	152	MA	D	E	HAZEN RD TO BROADWAY RD	Roadway Construction/Widening	Design	\$2,009	RARF	3500	-	YES	
173	13597	40710.00	S 085	122	154	MA	C	Y	HAZEN RD TO BROADWAY RD (MAINLINE)	Roadway Construction/Widening	Construction	\$2,010	STATE	5000	-	YES	
175	12306	40710.00	S 085	122	154	MA	C	Y	HAZEN RD TO BROADWAY RD (MAINLINE)	Roadway Construction/Widening	Construction	\$2,010	RARF	35000	-	YES	Refer to #173
176	11486	16606.00	S 085	121	123	MA	D	E	I-8 TI, PHASE I	Roadway Construction/Widening	Design	\$2,009	STATE	1440	-	YES	
177	12285	20806.00	S 085	152	155	MA	H595514C	E	SOUTHERN AVE TO I-10	Roadway Construction/Widening	Construct roadway	\$2,009	NH	34000	-	YES	
178	11863	10209.00	S 085	150	152	MA	C	E	HAZEN RD TO BROADWAY RD (MAINLINE)	Roadway Construction/Widening	Reconstruct & widen	\$2,010	STP	16200	-	YES	Refer to #173
180	11967	11609.00	S 086	137	141	PM	C	T	SAN PEDRO ROAD SEGMENT	Roadway Construction/Widening	Widen roadway to 40'	\$2,010	STP	8100	-	YES	
183	12427	13910.00	S 086	133	137	PM	C	T	KITT PEAK ROAD SEGMENT	Roadway Construction/Widening	Roadway widening	\$2,010	STATE	7000	-	YES	
185	12786	11408.00	S 086	141	145	PM	H713701C	T	MP 141.1 TO RESERVATION BOUNDARY	Roadway Widening	Construct roadway widening	\$2,009	STATE	1300	-	YES	See #186
186	12785	11408.00	S 086	141	145	PM	H713701C	T	MP 141.1 TO RESERVATION BOUNDARY	Roadway Construction/Widening	Construct roadway widening	\$2,009	PAG 2.6%	1800	-	YES	
187	11379	11508.00	S 086	160	166	PM	H680601C	T	VALENCIA RD - KINNEY RD	Roadway Construction/Widening	Construct roadway widening to 4 lanes	\$2,010	STP	16300	-	YES	
188	11381	11408.00	S 086	141	145	PM	H713701C	T	MP 141.1 TO RESERVATION BOUNDARY	Roadway Widening	Construct roadway widening	\$2,009	STP	5700	-	YES	See #186
189	12849	13409.00	S 087	263	263	GI	H718301C	P	TONTO NATURAL BRIDGE	Roadway Construction/Widening	Construct new road	\$2,010	STATE	675	-	YES	

ADOT Statewide Bicycle and Pedestrian Program
Summary of Phase V Activities

PROGRAMMED PROJECTS(2010-2014) THAT MAY PROVIDE BENEFIT TO CYCLISTS AND PEDESTRIANS

* MAP ID # CORRESPONDS TO PROJECT NUMBERS ON THE ACCOMPANYING MAP

MAP ID	RECID	ITEM NO	ROUTE	BEGIN MP	END MP	COUNTY	TRACS NO.	DISTRICT	LOCATION	WORK CATEGORY	WORK DESCRIPTION	CFY	FUNDS	COST	BENEFITS TO		
															PEDESTRIANS	BICYCLES	NOTE
190	13567	13709.00	S 087	241	244	GI	H659801C	P	OXBOW HILL, SB	Shoulder Improvements	Shoulder widening	\$2,009	HES	6000	-	YES	
192	12431	44110.00	S 087	204	210	MA	H678201C	E	NEW FOUR PEAKS RD TO DOS S RANCH RD	Shoulder Improvements	Climbing lane and shoulder widening	\$2,010	RARF	23000	-	YES	
193	12847	13209.00	S 087	346	346	NA	H717901C	H	HOMOLOVI RUINS STATE PARK	Roadway Construction/Widening	Construct road	\$2,010	STATE	1025	-	YES	
200	13528	10113.00	S 089	319	324	YV	H670101C	P	JCT 89A TO CHINO VALLEY (SOUTH CHINO LIMITS-JCT 89A) - PH II	Roadway Construction/Widening	Construct roadway widening	\$2,013	STP	10000	-	YES	
201	13056	10512.00	S 089	318	324	YV	C	P	JCT 89A TO MP 324	Roadway Construction/Widening	Widen the SR 89 corridor between SR 89A and MP 324 to improve capacity	\$2,012	STP	15000	-	YES	
203	12621	10412.00	U 089	465	469	CN	C	F	CAMERON SECTION	Roadway Construction/Widening	Construct 4-lane urban with raised median, SR 64 intersection & new bridge.	\$2,012	NH	10000	-	YES	
206	12792	13109.00	U 093	1	17	MO	H534701C	K	HOOVER DAM TO MP 17	Roadway Construction/Widening	Construct roadway widening	\$2,009	NH	40000	-	YES	
208	10867	10413.00	U 093	116	120	MO	C	K	CARROW TO STEPHENS	Roadway Construction/Widening	Construct 4-lane divided highway	\$2,013	NH	21400	-	YES	
209	12460	17209.00	U 093	192	194	YV	H682101C	P	WICKENBURG WAY NORTH	Pavement Preservation	RR ARFC & spot milling	\$2,009	NH	2150	-	YES	
210	11374	11608.00	U 093	0	1	MO	H3955XXC	K	HOOVER DAM BRIDGE	Roadway Construction/Widening	Construct new bridge	\$2,009	STATE	4000	-	YES	
212	10863	11410.00	U 093	104	124	MO	C	K	SB RANCH ROAD	Roadway Construction/Widening	Construct parallel roadway	\$2,011	NH	5875	-	YES	
220	12327	14410.00	S 095	129	131	LA	H675701C	Y	PASSING LANES SOUTH OF BOUSE WASH	Roadway Construction/Widening	Construct passing lanes	\$2,010	NH	1800	-	YES	
248	7600	11710.00	U 160	376	381	NA	H512001C	H	JCT SR 564 - TSEGI, PHASE I	Roadway Construction/Widening	Construct dual passing lanes	\$2,010	NH	2250	-	YES	
249	12406	12209.00	U 160	376	381	NA	H512001D	H	JCT SR 564 - TSEGI, PHASE I	Roadway Construction/Widening	Design dual passing lanes	\$2,009	STATE	77	-	YES	
250	8898	22802.00	U 160	311	322	CN	H527401C	F	JCT 89 - VAN'S TRADING POST	Pavement Preservation	2" ARAC & ARFC & turn lanes	\$2,009	STP	4019	-	YES	
251	12538	22802.00	U 160	311	322	CN	H527401C	F	JCT 89 - VAN'S TRADING POST	Pavement Preservation	2" ARAC & ARFC & turnlanes	\$2,009	STATE	75	-	YES	Refer to # 250
252	11351	16709.00	U 160	390	402	NA	H635601C	H	KAYENTA - JCT IR 59	Pavement Preservation	2 1/2" AC & ARFC	\$2,009	NH	9350	-	YES	
260	9148	12010.00	U 191	446	447	AP	H543801C	H	CHINLE SOUTH	Roadway Construction/Widening	Roadway widening.	\$2,011	STP	2375	-	YES	
261	10392	11810.00	U 191	92	94	GH	H503704C	S	DIAL WASH TO TEN RANCH (SEG II)	Roadway Construction/Widening	Construct parallel roadway	\$2,011	STP	8750	-	YES	
262	4752	11606.00	U 191	418	420	AP	H451801C	H	BURNSIDE JUNCTION - NORTH	Roadway Construction/Widening	Roadway Widening	\$2,009	STP	7500	-	YES	
264	13685	11606.00	U 191	418	420	AP	H451801C	H	BURNSIDE JUNCTION - NORTH	Roadway Widening	Roadway Widening	\$2,009	GVT	1800	-	YES	See #262
266	13625	11606.00	U 191	418	420	AP	H451801C	H	BURNSIDE JUNCTION - NORTH	Roadway Widening	Roadway Widening	\$2,009	STP	5000	-	YES	See #262
267	11734	17309.00	U 191	49	50	CH	H650901C	S	SUNSIDES AT HIGH STREET	Roadway Construction/Widening	Widen roadway for left turns	\$2,009	STATE	595	-	YES	
268	10780	14210.00	U 191	390	392	AP	H602501C	H	WIDE RUINS	Roadway Construction/Widening	Widening for Passing/Climbing lanes, safety	\$2,010	STP	2400	-	YES	
270	10639	12303.00	U 191	367	369	AP	H436001C	H	NAHATA' DZIL RD - SANDERS TI	Roadway Construction/Widening	Reconstruct 3 bridges and roadway	\$2,010	HES	1528	-	YES	
273	12407	12309.00	U 191	446	447	AP	H543801D	H	CHINLE SOUTH	Roadway Construction/Widening	Design roadway widening	\$2,009	STATE	104	-	YES	
302	4662	12510.00	S 260	317	332	NA	H770501C	G	HEBER TO SHOW LOW, MP317.16-317.9 EB, MP 319.23-320.45 WB, MP 330.75-332, WB	Roadway Construction/Widening	Construct passing lanes	\$2,011	NH	3000	-	YES	
303	12414	12210.00	S 260	214	224	YV	C	P	WESTERN DRIVE TO THOUSAND TRAILS	Roadway Construction/Widening	Reconstruct roadway (JPA payment)	\$2,010	STATE	11000	-	YES	
305	13617	12008.00	S 260	212	218	YV	H750601C	P	CHERRY CREEK	Roadway Construction/Widening	Safety improvements	\$2,009	GVT	2500	-	YES	
309	11957	16409.00	S 260	206	209	YV	H657501C	P	COTTONWOOD AREA	Pavement Preservation	RR 3" & ARFC	\$2,009	STP	3051	-	YES	
310	11099	15605.00	S 260	269	269	GI	H469801D	P	DOUBTFUL CANYON SECTION	Roadway Construction/Widening	Design (Roadway)	\$2,010	STATE	500	-	YES	
312	5135	14601.00	S 260	263	270	GI	H469901C	P	LITTLE GREEN VALLEY	Roadway Construction/Widening	Reconstruct Roadway	\$2,009	NH	38000	-	YES	
314	7936	21301.00	S 260	258	260	GI	D	P	LION SPRINGS SECTION	Roadway Construction/Widening	Design (Roadway)	\$2,009	STATE	1300	-	YES	
316	12782	10011.00	S 260	214	224	YV	C	P	WESTERN DRIVE TO THOUSAND TRAILS	Roadway Construction/Widening	Reconstruct roadway (JPA payment)	\$2,011	STATE	11200	-	YES	
317	12194	12509.00	S 260	317	332	NA	H770501D	G	HEBER TO SHOW LOW, MP317.16-317.9 EB, MP 319.23-320.45 WB, MP 330.75-332, WB	Roadway Construction/Widening	Design 3 passing lanes	\$2,009	STATE	300	-	YES	
318	13272	11612.00	S 260	214	224	YV	C	P	WESTERN DRIVE TO THOUSAND TRAILS	Roadway Construction/Widening	Reconstruct roadway (JPA payment)	\$2,012	STATE	2800	-	YES	
320	11543	14809.00	S 264	390	390	NA	H649401C	H	POLACCA	Roadway Construction/Widening	Construct turn lanes	\$2,009	STATE	1400	-	YES	
2	13205	16508.00	I 008	2	0	YU	H705301C	Y	I-8 AND US 95 TI UP STRUCTURE #1380	Traffic Interchange	Widen TI	\$2,009	STATE	1000	YES	-	
5	12423	13510.00	I 010	259	259	PM	L	T	I-10 WEST		Corridor Study	\$2,010	STATE	3000	YES	-	

ADOT Statewide Bicycle and Pedestrian Program
Summary of Phase V Activities

PROGRAMMED PROJECTS(2010-2014) THAT MAY PROVIDE BENEFIT TO CYCLISTS AND PEDESTRIANS

* MAP ID # CORRESPONDS TO PROJECT NUMBERS ON THE ACCOMPANYING MAP

MAP ID	RECID	ITEM NO	ROUTE	BEGIN MP	END MP	COUNTY	TRACS NO.	DISTRICT	LOCATION	WORK CATEGORY	WORK DESCRIPTION	CFY	FUNDS	COST	BENEFITS TO		
															PEDESTRIANS	BICYCLES	NOTE
6	13420	11213.00	I 010	264	265	PM	C	T	COUNTRY CLUB ROAD TI	Traffic Interchange	Construct new TI	\$2,013	NH	10000	YES	-	Refer to #19
11	11375	10208.00	I 010	248	250	PM	H758301C	T	INA RD TI	Traffic Interchange	Reconstruct TI & Mainline	\$2,011	IM	17400	YES	-	
12	13285	44909.00	I 010	105	106	MA	H683801X	Y	DESERT CREEK TI (PRIVATE FUNDS)	Traffic Interchange	Construct TI	\$2,010	PRVT	18500	YES	-	
19	13068	11312.00	I 010	264	265	PM	D	T	COUNTRY CLUB ROAD TI	Traffic Interchange	Design traffic interchange	\$2,012	STATE	4000	YES	-	
20	13070	11512.00	I 010	267	268	PM	D	T	VALENCIA ROAD TI	Traffic Interchange	Design traffic interchange	\$2,012	STATE	25000	YES	-	
23	12889	16108.00	I 010	248	250	PM	H758301L	T	INA RD TI	Traffic Interchange	Design TI	\$2,009	STATE	3000	YES	-	
32	13388	10513.00	I 010	267	268	PM	C	T	VALENCIA ROAD TI	Traffic Interchange	Widen bridge	\$2,013	NH	17824	YES	-	Refer to #20
37	13067	11212.00	I 010	263	263	PM	D	T	KINO TI	Traffic Interchange	Design traffic interchange	\$2,012	STATE	4000	YES	-	
40	10751	14506.00	I 010	236	246	PM	H583801C	T	TWIN PEAKS (LINDA VISTA TI)	Traffic Interchange	Construct TI (Per Letter of Intent signed June 13, 2001)	\$2,009	NH	14000	YES	-	
41	12931	10208.00	I 010	248	250	PM	C	T	INA RD TI	Traffic Interchange	Reconstruct TI & Mainline	\$2,010	NH	17764	YES	-	Refer to #11
46	13009	10106.00	I 010	301	303	CH	H650401C	S	SR 90 TI	Traffic Interchange	Reconstruct SR 90 TI and add passing lane	\$2,009	NH	21000	YES	-	Refer to #28
50	13365	15709.00	I 010	264	265	PM	HX19901C	T	PALO VERDE TI	Traffic Interchange	Install roadway lighting	\$2,009	STATE	436	YES	-	
53	13650	18209.00	I 010	248	253	PM	H758301L	T	INA RD TO RUTHRAUFF RD	Roadway Widening	DCR and EA	\$2,009	STATE	4000	YES	-	
56	10774	14506.00	I 010	236	237	PM	H583801C	T	TWIN PEAKS (LINDA VISTA TI)	Traffic Interchange	Construct TI (Per Letter of Intent signed June 13, 2001)	\$2,009	GVT	68000	YES	-	
61	13666	15709.00	I 010	264	265	PM	HX19901C	T	PALO VERDE TI	Traffic Interchange	Install roadway lighting	\$2,009	STATE	375	YES	-	Refer to #50
62	13426	11313.00	I 010	269	270	PM	C	T	WILMOT ROAD TI	Traffic Interchange	Upgrade existing TI	\$2,013	NH	6000	YES	-	
69	10428	13410.00	I 010	247	247	PM	H733601C	T	CORTARO RD TI	Traffic Interchange	Construct new TI	\$2,010	NH	2206	YES	-	
78	561	13603.00	I 017	263	264	YV	H426901C	P	CORDES JCT TI	Traffic Interchange	Reconstruct TI	\$2,009	IM	31725	YES	-	
93	12514	43010.00	I 017	205	207	MA	D/C	E	BETHANY HOME RD TO NORTHERN AVE	Pedestrian Bridge	Design/Construct pedestrian walkway along the frontage roads	\$2,010	CM	2295	YES	-	
102	13720	18509.00	I 019	47	48	PM	H722201C	T	SAHUARITA TI	Traffic Interchange	New Traffic Interchange	\$2,009	IM	3000	YES	-	
103	13736	18409.00	I 019	47	48	PM	H722201D	T	SAHUARITA TI	Traffic Interchange	Design	\$2,009	PAG 2.6%	2100	YES	-	See #102
104	13682	16509.00	I 019	46	46	PM	HX21301C	T	I-19 AND SAHUARITA RD	Traffic Interchange	Install new traffic signal	\$2,009	STATE	300	YES	-	
107	13063	14310.00	I 040	359	360	AP	L	H	LUPTON TI	Traffic Interchange	Design Concept Report (DCR)	\$2,010	STATE	1000	YES	-	
116	12602	10213.00	I 040	57	57	MO	H681401C	K	RATTLESNAKE WASH TI	Traffic Interchange	Construct new TI	\$2,013	NH	18000	YES	-	
124	13596	40613.00	U 060	194	195	MA	C	E	MERIDIAN RD	Traffic Interchange	Construct TI	\$2,013	NH	4000	YES	-	
126	13561	40613.00	U 060	194	195	MA	C	E	MERIDIAN RD	Traffic Interchange	Construct TI	\$2,013	STATE	4000	YES	-	Refer to 124
136	12670	40711.00	U 060	183	184	MA	D	E	LINDSAY RD HALF INTERCHANGE	Traffic Interchange	Design TI	\$2,011	STATE	800	YES	-	
138	13170	40612.00	U 060	194	195	MA	D	E	MERIDIAN RD	Traffic Interchange	Design TI	\$2,012	STATE	800	YES	-	Refer to 124
174	13640	44510.00	S 085	120	122	MA	R	E	I-8 TI, PHASE I & II	Traffic Interchange	R/W	\$2,010	STATE	9500	YES	-	
179	11487	13607.00	S 085	121	123	MA	H595509C	Y	I-8 TI, PHASE I	Traffic Interchange	Construct roadway	\$2,010	STP	9100	YES	-	
197	13680	15110.00	S 089	269	270	YV	H749601C	P	MARTINEZ RIVER BRIDGE, STR #1320	Roadway Lighting	Scour retrofit	\$2,010	STATE	220	YES	-	
198	1620	10810.00	SA089	399	399	CN	H413401C	F	AIRPORT ROAD TI (JW POWELL BLVD)	Intersection Improvements	Construct intersection improvements	\$2,011	STP	6250	YES	-	
219	13728	17509.00	S 095	235	235	MO	HX16601C	K	SR 95 AT LIPAN	Intersection Improvements	Intersection improvements	\$2,009	STATE	210	YES	-	See # 222
222	13715	17509.00	S 095	235	235	MO	HX16601C	K	SR 95 AT LIPAN	Intersection Improvements	Intersection improvements	\$2,009	STATE	332	YES	-	
223	13729	17509.00	S 095	235	235	MO	HX16601C	K	SR 95 AT LIPAN	Intersection Improvements	Intersection improvements	\$2,009	GVT	408	YES	-	See # 222
237	12672	40811.00	S 101	16	17	MA	D	E	UNION HILLS DR (CITY ADVANCEMENT)	Traffic Interchange	Design TI	\$2,009	RARF	500	YES	-	
239	13173	40812.00	S 101	16	17	MA	H707601C	E	BEARDSLEY RD / UNION HILLS DR (CITY ADVANCEMENT)	Traffic Interchange	Construct TI	\$2,009	RARF	27500	YES	-	

ADOT Statewide Bicycle and Pedestrian Program
Summary of Phase V Activities

PROGRAMMED PROJECTS(2010-2014) THAT MAY PROVIDE BENEFIT TO CYCLISTS AND PEDESTRIANS

* MAP ID # CORRESPONDS TO PROJECT NUMBERS ON THE ACCOMPANYING MAP

MAP ID	RECID	ITEM NO	ROUTE	BEGIN MP	END MP	COUNTY	TRACS NO.	DISTRICT	LOCATION	WORK CATEGORY	WORK DESCRIPTION	CFY	FUNDS	COST	BENEFITS TO		
															PEDESTRIANS	BICYCLES	NOTE
269	576	12303.00	U 191	367	369	AP	H436001C	H	NAHATA' DZIL RD - SANDERS TI	Roadway Construction	Reconstruct 3 bridges and roadway	\$2,010	STP	15254	YES	-	See #270
313	13633	15009.00	S 260	354	358	NA	H659701C	G	HILL DRIVE TO BRANDING IRON LOOP ROAD		Construct path & sidewalk	\$2,009	TEA	767	YES	-	
7	13024	44109.00	I 010	119	126	MA	H721101C	E	VERRADO WAY TO SARIVAL AVE	Roadway Construction/Widening	Construct General Purpose Lane (GPL) (STAN Advancement)	\$2,009	STATE	43200	YES	YES	
99	11963	12009.00	I 019	34	35	PM	C	T	CANOA TI - CONTINENTAL TI	Roadway Construction/Widening	Construct roadway (NB frontage road)	\$2,009	PAG 2.6%	1000	YES	YES	
100	12818	12009.00	I 019	34	35	PM	C	T	CANOA TI - CONTINENTAL TI	Roadway Construction/Widening	Construct roadway (NB frontage road)	\$2,010	PAG 2.6%	1200	YES	YES	
130	11982	14407.00	U 060	220	220	GI	C	G	BOYCE THOMPSON STATE PARK	Roadway Construction/Widening	Construct road	\$2,009	STATE	1400	YES	YES	
135	12617	10313.00	U 060	212	225	PN	C	G	SUPERIOR STREETS	Roadway Construction/Widening	Reconstruct to 4 lane roadway with center turn lane	\$2,013	STP	9800	YES	YES	
143	12454	14309.00	U 070	339	339	GH	H680801C	S	8TH AVE INTERSECTION	Intersection Improvements	Intersection Improvements	\$2,009	STATE	116	YES	YES	
150	13609	14309.00	U 070	339	339	GH	H680801C	S	8TH AVE INTERSECTION	Intersection Improvements	Intersection Improvements	\$2,009	STATE	75	YES	YES	
160	12892	14110.00	S 077	82	88	PM	C	T	TANGERINE RD TO PINAL COUNTY LINE	Roadway Construction/Widening	Widening to 6 lanes	\$2,010	STATE	2000	YES	YES	
161	13386	11413.00	S 077	82	88	PM	C	T	TANGERINE RD TO PINAL COUNTY LINE	Roadway Construction/Widening	Widening to 6 lanes	\$2,013	STP	12677	YES	YES	
162	12797	11505.00	S 077	77	82	PM	H545901C	T	CALLE CONCORDIA - TANGERINE RD	Roadway Construction/Widening	Widen to 6 lanes	\$2,010	STP	7000	YES	YES	
165	13065	14110.00	S 077	82	88	PM	C	T	TANGERINE RD TO PINAL COUNTY LINE	Roadway Construction/Widening	Widening to 6 lanes	\$2,012	STP	10800	YES	YES	
169	13603	10411.00	S 082	20	20	SC	H718201C	T	PATAGONIA LAKE (SONOITA CREEK)	Roadway Construction/Widening	Construct road	\$2,011	STATE	550	YES	YES	
181	13020	20107.00	S 086	160	166	PM	H719001C	T	KINNEY ROAD INTERSECTION	Intersection Improvements	Reconstruct intersection and approximately 4,300 ft. of roadway to 4-lane divided	\$2,009	STATE	3300	YES	YES	
205	11621	10910.00	S 090	324	326	CH	H655501C	S	CENTRAL AVE TO MOSON RD, E OF SIERRA VISTA	Roadway Construction/Widening	Widen to 5 lanes	\$2,011	NH	5000	YES	YES	
224	4648	11510.00	U 095	32	47	YU	H459901C	Y	AVENUE 9E TO ABERDEEN ROAD	Roadway Construction/Widening	Reconstruct Fortuna Wash Bridge and Ave 11E intersection, widen roadway	\$2,011	NH	10000	YES	YES	
225	12844	15708.00	U 095	0	0	MO	D	K	LAKE HAVASU STATE PARK (CONTACT POINT)		Design, Phase I	\$2,010	STATE	250	YES	YES	
236	11265	16006.00	S 101	54	54	MA	C	E	BALBOA DRIVE		Construct multi-use path bridge over the Price Freeway (City of Tempe sponsor)	\$2,012	GVT	2000	YES	YES	
255	13677	50309.00	S 179	302	310	YV	H748201X	N	RED ROCK SCENIC BYWAY		Develop and implement the Year 2 CMP	\$2,009	SB	25	YES	YES	
259	10578	11406.00	U 191	92	94	GH	H503704D	S	DIAL WASH TO TEN RANCH (SEG II)	Roadway Construction/Widening	Design (New Roadway East of Existing)	\$2,010	STATE	233	YES	YES	
307	13613	12008.00	S 260	212	218	YV	H750601C	P	CHERRY CREEK	Roadway Construction/Widening	Safety improvements	\$2,009	STP	5250	YES	YES	Refer to #305
315	13632	14909.00	S 260	350	350	NA	H621401C	G	PORTER MOUNTAIN ROAD TO WOODLAND ROAD	Roadway Construction/Widening	Construct landscaping, irrigation and pedestrian lighting	\$2,009	TEA	481	YES	YES	

APPENDIX D – LEAGUE OF AMERICAN BICYCLISTS, 2009 BICYCLE FRIENDLY STATE, RANKING AND AWARD APPLICATIONS