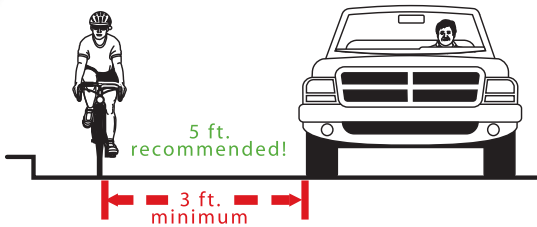


Motorists

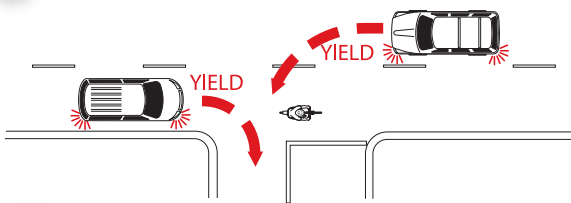
Be a

ROLL MODEL!

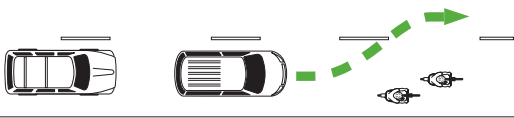
It's the law! Give bicycles at least 3 feet when you pass. When possible, give 5 feet of clearance. Slow down and don't pass until it's safe to do so.



Be watchful at intersections. Cyclists may be traveling faster than you expect. Yield to bicycles as you would with any other moving vehicle.



Be aware of bikes. Cyclists have the same legal rights to use the road as motorists. Cyclists can legally ride two abreast on the roadway as long as they do not unnecessarily slow traffic. In several circumstances, cyclists can use the entire travel lane.

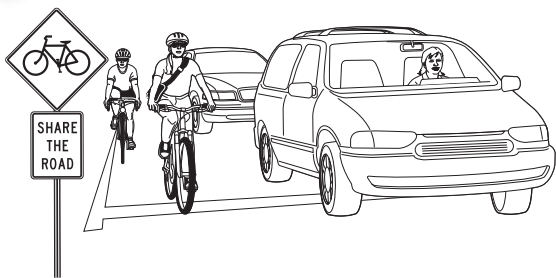


Bicyclists

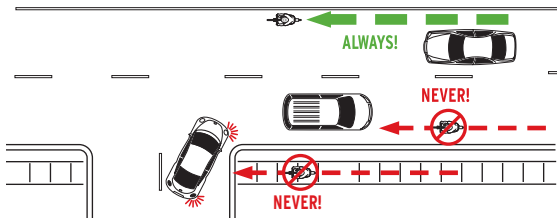
Be a

ROLL MODEL!

! Show respect for all users of the road and you'll get respect back as a result. Cyclists and drivers: same roads, same rules, same rights and responsibilities.



! Ride on the right with the flow of traffic. NEVER ride against traffic on the road, in a bike lane or on a sidewalk. Drivers turning from the side cannot see you approaching, and approaching drivers will not expect you to be riding the wrong way.



Funding provided by
a grant from the Governor's
Office of Highway Safety.

